

**Products Specification**

● Principle :  
Semiconductor Laser Flowcytometric Analysis  
Automatic Pulse Resistance Method  
Cyanide Free Colorimetric Method (HGB)

● Parameters :  
29 Parameters, 1 3D Scatter diagram, 3 Scatter diagrams (2D), 3 histograms  
26 Report Parameters:  
WBC, LYM%, LYM#, NEU%, NEU#, MON%, MON#, EOS%, EOS#, BAS%, BAS#, RBC, HGB, HCT, MCV, MCH, MCHC, RDW-CV, RDW-SD, PLT, PDW, MPV, PCT, P-LCR, P-LCC;  
4 Research Parameters :ALY#, ALY%, LIC#, LIC%;  
Alarm for confirmed & seemingly abnormal samples.

● Performance :

Item	Repeatability	Lineary Range
WBC	≤2.0%	0.0-300*10 <sup>9</sup> /L
RBC	≤1.5%	0.0-8.5*10 <sup>12</sup> /L
HGB	≤1.5%	0-250g/L
MCV	≤1.0%	40-150fL
PLT	≤4.0%	0-3000*10 <sup>9</sup> /L

● Carry Over:  
RBC, WBC, HGB<0.5%, PLT<1.0%  
● Control Mode : L-J, X, X - R, X-B  
● Power Supply : 100V- 240V , 50/60Hz, ±250VA

● Sample:  
3 Sample Mode, Whole Blood, Capillary Blood,  
Prediluted blood Volume ≤20μL

● Sample Method:  
Open & Close  
● Throughcut:  
80 Samples /hour  
● Data Management :  
LIS System automatic 2-way transmission management ,  
more than 100,000 samples result storage



Focus on Hematology over 20 years

WWW.INSIGNIABIO MEDICAL.COM

**Hemax 530 AL**

5 Part Autoload Hematology Analyzer



Authorized by : B&E Diagnostics Inc.  
804 Thomadale Ave, Bensenville IL 60106 USA  
Tel :+ 1 630 974 5159 Fax :+ 1 630 974 5160

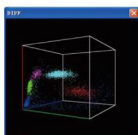
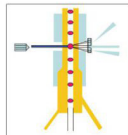
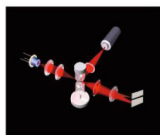


**Hemax 530 AL**

- ◆ Perfect traceable QC & Calibration System;
- ◆ Large Lineary Range, High Accuracy;
- ◆ Customize Print Templates

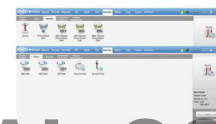
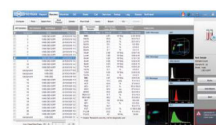
**Lase Scatter Technology**

Semiconductor laser flow cytometric Analysis to gather 3 angle scattering signal, output the three-dimensional scatter diagram with clear boundaries, abnormal cells could be identified more accurately;



**Simple Operation**

- Parts Maintenance-free  
Unique High- Precision Syringe , Long Life Imported Parts to assure the performance  
Unclogging : Cleaning Soak, flush apertures , Zap apertures
- Machine Maintenance-easy  
Daily Maintenance automatically by on & off  
One key to remove error automatically  
Sleep Status automatically without operation 30 minutes
- Advanced Management System  
Support WIN7 ,XP  
Could connect with LIS  
QC & Calibration  
Alarm System to Abnormal samples ,allow self setting



WWW.INSIGNIABIO MEDICAL.COM

**More Sample Types**

- Whole Blood 16μL
- Capillary Blood 16 μL
- Pre-diluted Blood 20μL

Less blood required, suit to the ambulant clinic test the finger blood sample, especially for infant and cancer chemotherapy patients.



**29 Parameters, 4 Reagents only**

Only 3 lyse for the 29 parameters .Cost Effective.

